



# Pickleball

Slinger Bag & Oscillator User Manual

# Slinger®

Designed and Developed by Slinger®.  
Patent Pending.

Covered by International Patent Applications

2709 N. Rolling Road Suite 138 Windsor Mill 21244 MD USA

I am Joe. Founder of Slinger®.

Like you, Racquet sports are a huge part of my life. I constantly found myself challenged to find the right playing partners, so I would use my club's ball machine. It was a pain having to learn how to use it, drag it out of its storage, and plug it in and set it up each time. I figured there was a better way to do this, and this is how the Slinger Bag was born. A lightweight, transportable, versatile and affordable ball launcher for Pickleball. Not only that, but I wanted something to store all of my Pickleball gear in one place, too. I hope you enjoy your Slinger as much as I do.

Thank you for being on this journey with me.



Joe Kalfa

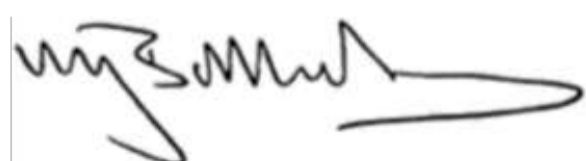
Founder

---

I am Mike. CEO of Slinger®.

I have been involved in racquet sports all of my life, from playing and coaching to running businesses. I know the challenge our sport faces in terms of keeping people playing and bringing in new players to the sport. The majority of people who leave the sport do so because they lack a consistent and quality playing partner. Slinger is solving this problem for the sport. We have put in thousands of hours of design, prototyping and testing into the Slinger Bag, taking Joe's idea and building a next-generation Pickleball ball launcher.

Thank you for supporting Slinger®. Designed by Players for Players.



Mike Ballardie

CEO

# Quick Access Links

CLICK ON THE ICONS BELOW FOR DIRECT ACCESS TO YOUR AREA OF INTEREST



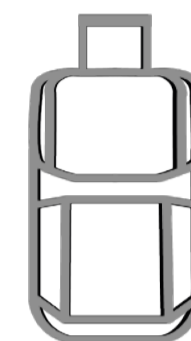
QUICK START

4



SAFETY

7



FEATURES

8



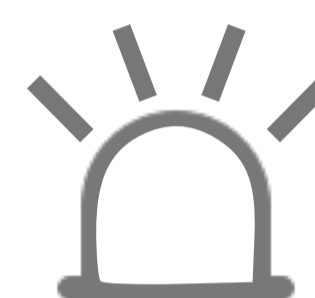
GETTING STARTED

11



BATTERY

12



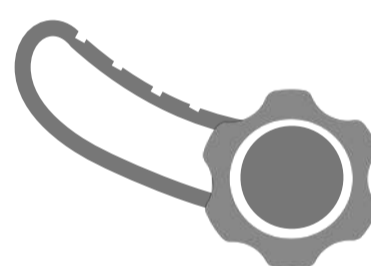
LED INDICATORS

15



LAUNCHER CONTROLS

18



ELEVATION KNOB

20



REMOTE CONTROL

21



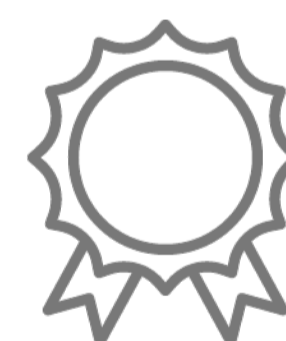
COURT PLACEMENT

22



TROUBLESHOOTING  
& MAINTENANCE

23



WARRANTY

26



COMPLIANCE

29

## QUICK START SLINGER BAG ONLY (NO OSCILLATOR)

Only after the battery has been initially charged for up to 5 hours as indicated on Page 12 is the Slinger Bag ready to be used on court.

Please follow these quick start operating guidelines

1. Position Slinger Bag on the court in your desired launching position. See our suggested positions based on level of play on pages 22 & 23.

2. Open / Unzip the lower front panel in order to display the Ball Launcher.



### USER NOTE

Hook the open door panel on to the side of the Trolley Bag using the clip provided on the left rear side as you look at the launcher.

3. Open / Unzip the top ball feeder panel. Make sure that nothing is obstructing the ball feeder. If all is clear load up to a recommended maximum of 92 pickleballs.



### USER NOTE

Slinger advises that the optimum ball launcher operation is achieved with 72 pickleballs.

5. On the front control panel adjust the control knobs to set the desired BALL SPEED, BALL FEED and BALL SPIN. See our suggested positions based on level of play on pages 22 & 23.

On the right bottom side of the launcher (as you look at it) unzip the elevation control knob cover. Adjust the elevation control knob to your desired launching angle - between 10° and 40°. See our suggested positions based on level of play on pages 22 & 23.

6. Turn 'ON' the Launcher power switch on the front control panel.

7. With all of the controls set up, take the remote control and proceed to your playing position.

8. Point the remote control at the Launcher and press the top "On/Off" pickleball icon button once in order to activate the ball feeder mechanism.



### USER NOTE

You will hear a single "beep" to signal that the launcher wheel has started. After 10 seconds you will hear a second "beep" signalling that the feeder plate is rotating and the balls are about to commence launching.

9. START PLAYING!

## QUICK START LAUNCHER WITH THE OSCILLATOR

Only after the battery has been initially charged for up to 5 hours as indicated on Page 12 is the Slinger Bag ready to be used on court.

Please follow these quick start operating guidelines

1. Position Slinger Bag on the court in your desired launching position. See our suggested positions based on level of play on pages 22 & 23..
2. Make sure that the Slinger® logo on the top of the Oscillator is facing forwards to the net and the wheel location slots are positioned at the rear.
3. Position Slinger Bag onto the top of the Oscillator making sure that the wheels are correctly located into the wheel slots provided on the Oscillator base.



### USER NOTE

Ensure that the Oscillator is positioned in its central (mid) location. This is the ideal starting position to obtain optimum Oscillation performance.

4. Open the lower front panel to display the ball launcher.



### USER NOTE

Hook the open door panel on to the side of the Trolley Bag using the clip provided on the left rear side as you look at the launcher.

5. Open the top ball feeder panel. Make sure that nothing is obstructing the ball feeder. If all is clear load up to a maximum of our recommended 92 pickleballs.



### USER NOTE

Slinger advises that the optimum ball launcher operation is achieved with 72 pickleballs.

6. On the front control panel adjust the control knobs to set the desired BALL SPEED, BALL FEED and BALL SPIN. See our suggested positions based on level of play on pages 22 & 23..

## QUICK START LAUNCHER WITH THE OSCILLATOR

7. On the right bottom side of the launcher (as you look at it) unzip the elevation control knob cover. Adjust the elevation control knob to your desired launching angle - between 10° and 40°. See our suggested positions based on level of play on pages 22 & 23..



### USER NOTE

After adjusting the elevation Knob please ensure that it is fully tightened before starting the Launcher.

8. Now turn 'on' the Launcher power switch.
9. Connect the Oscillator cable via the magnetic connector to the corresponding position on the Launcher control panel. You will see a GREEN LED indicator come on above the oscillator connector socket to indicate the Oscillator is connected.
10. With all of the controls set up, take the remote control and proceed to your playing position.
11. Point the remote control at the Launcher and press the top "On/Off" pickleball icon button once in order to activate the ball feeder mechanism and press the bottom "On/Off" Oscillator icon button in order to activate the Oscillator.



### USER NOTE

You will hear a single "beep" to signal that the launcher wheel has started. After 10 seconds you will hear a second "beep" signalling that the feeder plate is rotating and the balls are about to commence launching.

12. START PLAYING!

**Please ensure that the power is switched to "OFF" and unplugged from any electrical connection before attempting any activity which involves reaching into the launcher mechanism for any reason including for maintenance or cleaning.**



### IMPORTANT

It is highly recommended to always operate the Slinger Bag using the provided remote control for safety reasons. Please make sure not to misplace the remote. In exceptional circumstances, such as if the remote is lost, refer to page 19 for instructions on operating the launcher without the remote control.

**AT ALL TIMES THE USER MUST NOT UNDER ANY CIRCUMSTANCES:**

- Reach into the ball launching exit chute when the power is “ON”
- Look into the ball launching exit chute when the power is “ON”
- Stand directly in front of the ball launching exit chute at any time when the power is “ON”
- Insert any foreign objects of any kind into the ball hopper while the power is “ON”
- Use the Launcher in wet conditions or when rain is on courts or where water has collected.

**PLEASE READ ALL USER INSTRUCTIONS BEFORE USE****WARNING**

To reduce the risk of electrical shock, fire, injury to persons, and other damage when using this product, please follow these basic safety precautions.

1. To protect against the risk of electrical shock, never immerse any part of this launcher in water or any other liquid.
2. Close supervision is necessary when operating this launcher near children.
3. Never walk in front of this launcher when it is operating. Pickleballs leave the launcher at high speeds and could cause serious injury.
4. Always stand to the side, or behind the launcher when attempting to alter the settings of the various controls.
5. If it is necessary to free a jammed pickleball, make sure that the launcher is turned “OFF”.
6. Always wear protective eye-wear when attempting any repairs or adjustments on this Launcher.
7. Never attempt any repairs or adjustments on this launcher when it is plugged in. Always turn the power switch OFF and make sure the charger is not connected to any wall socket.
8. This launcher is intended for launching pickleballs only. Never attempt to use this launcher with any other type of ball or any foreign object whatsoever.
9. Always make sure that the launcher is turned off on the control panel when not in use and when the battery is being charged. Never place your hands or any other part of your body near moving parts, especially the ball feeder plate and the launching wheel. Please be aware that the launching wheel continues to spin at high speed for several minutes after the launcher is switched off and can cause injury or burns if coming in contact with your hands.

## SLINGER BAG FEATURES

The Slinger Bag operates to its optimum level when using standard sized pickleballs. Please avoid using either old or damaged pickleballs as this will reduce performance of the Launcher.

The Slinger Bag is designed for use by pickleball players of all ages and abilities.

The Slinger Bag weighs 19kg or 42 lbs (excluding pickleballs). It is one of the lightest performance ball launchers of its kind on the market. The trolley bag is versatile and functional and can carry all your pickleball equipment. The launcher can be set up and ready to use in minutes.

The Slinger Bag ball speeds ranges from the Ball Boy low speed of 10mph/16kmph to an advanced player speed of 45mph / 73kmph.



### USER NOTE

The top speed can only be reached in FLAT mode (and not when spin knob is set to either TOP or UNDER spin).

### The Slinger Bag features include:

- Smart-enabled pickleball trolley bag with a variety of functional pockets.
- Variable ball feed rate between 2 and 7 seconds.
- Variable Spin function ranging from underspin, to flat to topspin settings.
- 92 pickleball capacity ball hopper.



### USER NOTE

Slinger recommends using 72 balls for optimum performance.

- Lithium Ion battery.



### USER NOTE

Battery Life depends on usage. If used on low settings including Oscillation then the battery life is up to 3 hours and this reduces to 1.5hrs when used at maximum speed, feed and oscillation including cell phone charging.

- A multi-country, multi-voltage smart, fast charger. When the battery is fully charged the power is automatically reduced to an occasional smart 'pulse' to protect the life span of the battery.



### USER NOTE

It is advised to (a) charge the battery outside of the bag when possible and (b) not to charge the battery for more than 5 hours in any charging period.

- Integrated USB charger for mobile/cell phone charging.
- A remote control to operate both the Launcher and the Oscillator remotely with "On" and "Off" control ONLY.
- An elevation bar offers between 10 and 40 degrees of ball elevation.
- The Slinger Oscillator (Oscillator is sold separately or in a bundle) is designed to house the Slinger Bag sitting on top of it and provides side-to-side oscillation of the Slinger Bag.



## SLINGER BAG AT A GLANCE



## SLINGER BAG AT A GLANCE

Slinger®



1. EXTENDABLE TROLLEY HANDLE



2. CLIP ON CAMERA HOLDER



3. SIDE POCKET TO STORE REMOTE



4. BALL LAUNCHER PROTECTIVE COVER



5. SLINGER OSCILLATOR \*



6. BALL HOPPER POCKET



7. LITHIUM ION BATTERY DRAWER



8. LAUNCHER GRAB HANDLE



9. SMART POWER CABLE CHARGER  
(WITH 4 SOCKET ADAPTERS)



10. BALL LAUNCHER CONTROL PANEL



11. TELESCOPE BALL TUBE \*



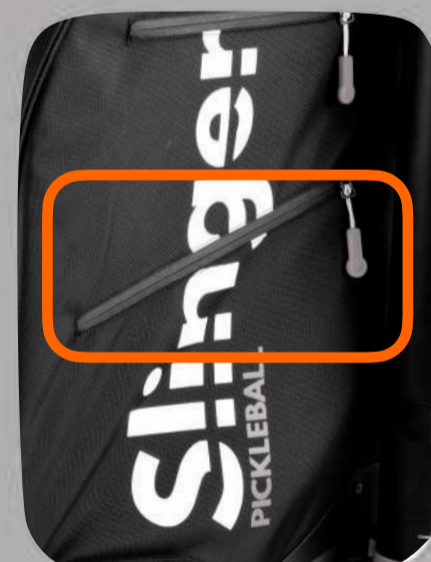
12. LARGE STORAGE POCKET  
(BRACKETS, EQUIPMENT, GEAR)



13. BALL FEEDER / STORAGE COMPARTMENT



14. USB PHONE CHARGING PORT  
(LOCATED INSIDE POCKET)



15. ADDITIONAL POCKET  
(FOR ADDITIONAL STORAGE)



16. BALL ELEVATION KNOB POCKET



17. LAUNCHER SERIAL NUMBER  
(LOCATED ABOVE ELEVATION KNOB)



18. BALL FEEDER PLATE  
(INSIDE FEEDER POCKET)



19. BATTERY POWER CHARGER



20. SLINGER REMOTE CONTROL

\* Sold separately or in a bundle pack

## GETTING STARTED

The Slinger Bag lithium battery is shipped to you at a maximum 30% charge in accordance with federal requirements for shipment of Lithium Batteries.

### ASSEMBLING THE CHARGER CABLE

The following are actions will ensure optimum battery life and performance:

- Please select the correct plug socket adaptor for your region.
- Please ensure that the plug socket selected is correctly fitted to the main charger body and that it has “clicked” into place.



#### NOTE

The battery will not charge if the plug socket is not correctly fitted.

- Connect the power cable to a wall power outlet. Please note a GREEN light will now appear on the charger plug to indicate the power is ‘On’.
- Connect the charger cable to the power outlet on the Launcher control panel.



#### USER NOTE

Please ensure that the power cable is ‘pushed’ fully into the power socket on the control panel creating a tight connection.

- If the battery has less than full power then the indicator light on the charger plug will show RED and charging will take place. The indicator light will turn GREEN when the battery is fully charged and the power socket should then be removed from the power outlet
- If indicator light remains GREEN then the battery is already fully charged. In this case please immediately disconnect the battery from the power outlet.



#### NOTE

In order to prevent the battery overheating it is not advised to leave the power outlet connected to the battery for longer than 5 hours in any charging period



#### NOTE

The Launcher CANNOT be used when connected to the power outlet. This will irreparably damage the battery.

## LITHIUM BATTERY

Before using the Launcher for the first time please make sure that the battery is left to charge for a maximum 5 hour charge period in order to optimize the battery life.

The Slinger battery has up to 3 hours of battery life at average speed and feed settings.

## MAXIMIZING THE LIFE OF THE BATTERY

The following are actions will ensure optimum battery life and performance:

- Charge the battery for a period of 5 hours (maximum) before first use to ensure it is fully charged.
- Recharge battery immediately after each use – again for a charging period of no more than 5 hours.
- Do not leave the battery connected to the external power supply for any longer than 5 hours in order to prevent the battery overheating.
- Do not store the battery for more than 30 days without recharging it to a minimum 30% level.
- Do not store the Slinger Bag Launcher in a closed car trunk or other location where the internal temperature can reach 100°F or 40° C. Hot environments speed up battery aging.
- It is best to avoid using your launcher in extremely hot weather or leaving your launcher stored for long periods in rooms that experience direct sunlight for prolonged periods. The same goes for cold garages in winter.
- We recommend that you store your Launcher battery at temperatures between 64°F–82°F (18°C–28°C), away from direct sunlight.

## BATTERY CHARGING INSTRUCTIONS

To avoid any risk of overheating it is always recommended to charge the Lithium Battery OUTSIDE of the Slinger Bag. The battery is easily removed in a few seconds as detailed on page 15.



### USER NOTE

For additional, and more detailed information about charging and removing your battery pack, visit [www.slingerbag.com/support](http://www.slingerbag.com/support).

Before going through the battery charging instructions, please take the following into account:

- Connect the battery to an electrical wall socket using the correct socket adapter provided as part of the charger cable pack.
- Insert the battery charger cable to the charging port on the control panel or if you have removed the battery from the Launcher, insert the battery charger into the back port on the battery box.
- Charging time should be a MAXIMUM OF 5 HOURS in any charging period
- The battery is best fully charged before the first use.
- There is a light on the charger. When the charger is correctly plugged in, the indicator light will turn RED and will change to GREEN when the battery is fully charged. If the indicator light is GREEN please immediately REMOVE the charger from the power outlet to prevent the battery overheating.
- Leaving the battery uncharged for an extended period of time will diminish the battery life.

## REMOVING YOUR BATTERY PACK

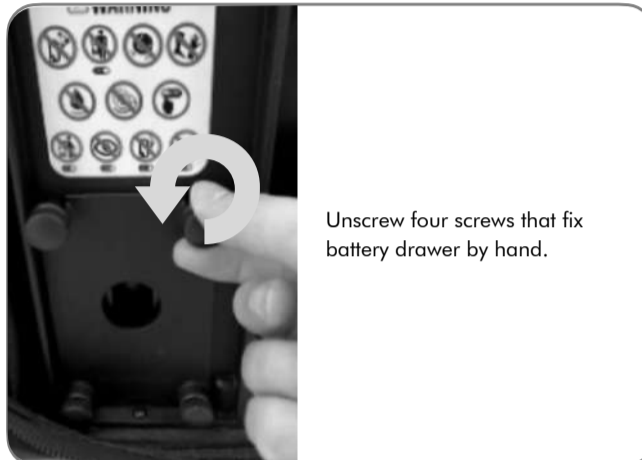


### WARNING

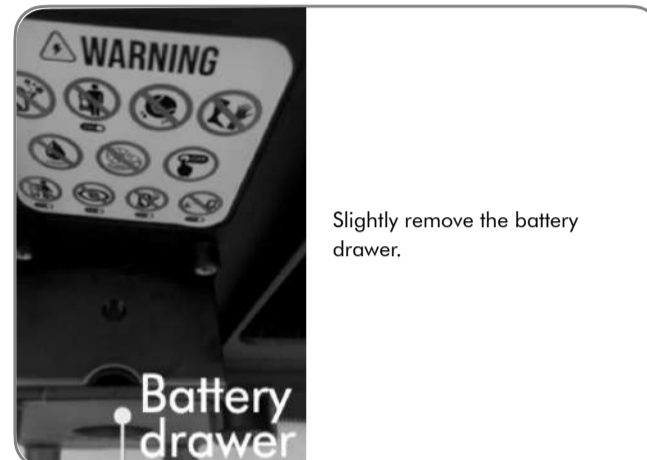
Make sure you switch your Slinger Bag off before removing its battery.

Please follow the 7 steps outlined below:

#### Step 1



#### Step 2



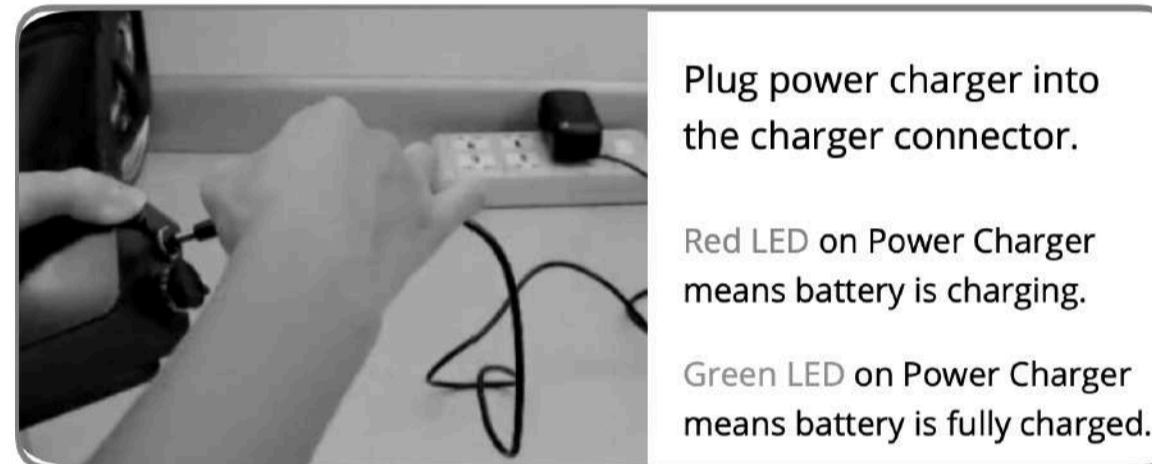
#### Step 3



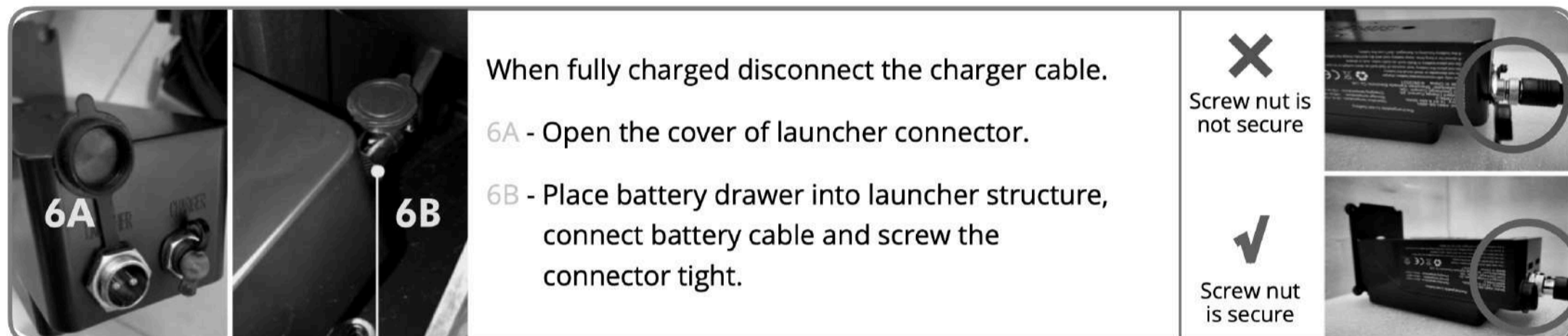
#### Step 4



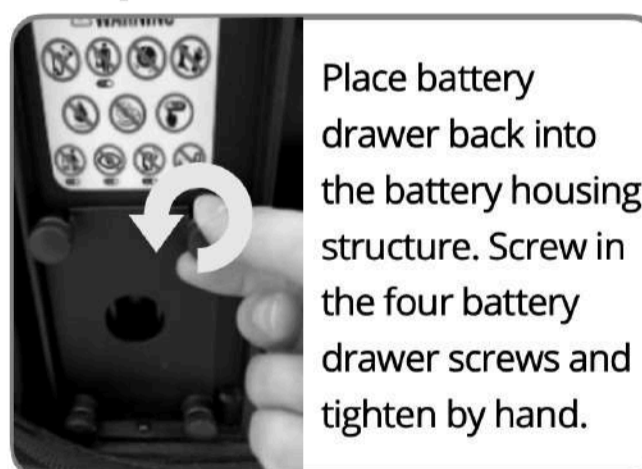
#### Step 5



#### Step 6



#### Step 7



### USER NOTE

For additional, and more detailed information about charging or removing your battery pack, visit [www.slingerbag.com/support](http://www.slingerbag.com/support).

## BATTERY L.E.D. INDICATORS

The Battery LED lights on the control panel will indicate the current battery power level.

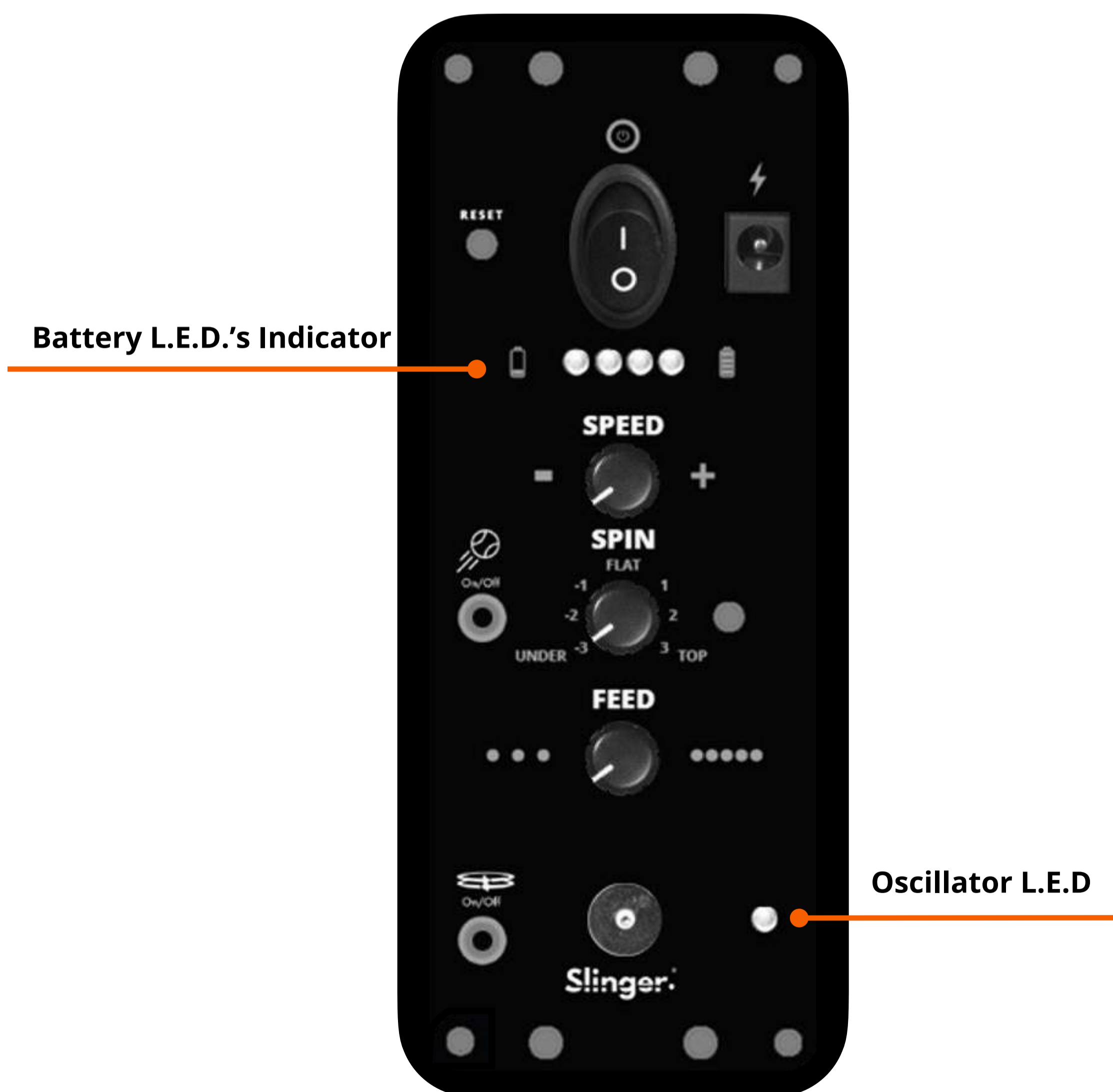
When all 4 lights are green, it means the battery is fully charged. As the battery power is being used, the green lights will decrease to 3 green lights, then 2, and finally to 1 green light, indicating a decreasing battery power level from full to medium to low.

If only 1 yellow light is present, it indicates that the battery power is now low.

Finally, if only 1 red light is illuminated, it signals that the battery is in a very low state and needs to be recharged as soon as possible.

## OSCILLATOR L.E.D.

The Oscillator LED INDICATOR is GREEN to indicate that the Oscillator is connected and switched on after pressing the Oscillator "ON / OFF" button (lower button) on the remote control or activating it manually.



## FREQUENTLY ASKED QUESTIONS ABOUT YOUR BATTERY

1. **Can I buy a replacement / spare battery ?**

Yes, replacement batteries can be ordered at [SlingerBag.com](https://SlingerBag.com)

3. **My battery has no power ?**

Check battery cable is correctly attached at back of battery (check step 6 on page 7). If the problem persists please contact [support@slingerbag.com](mailto:support@slingerbag.com).

5. **Storage during Winter months**

Store your battery at room temperature to conserve its battery cells.

7. **Can I charge my battery outside of the bag ?**

Yes, in fact we recommend this method of charging and it allows you to store your battery separately from your Slinger Bag, protecting the battery from temperature extremes.

9. **What should I do with my old battery ?**

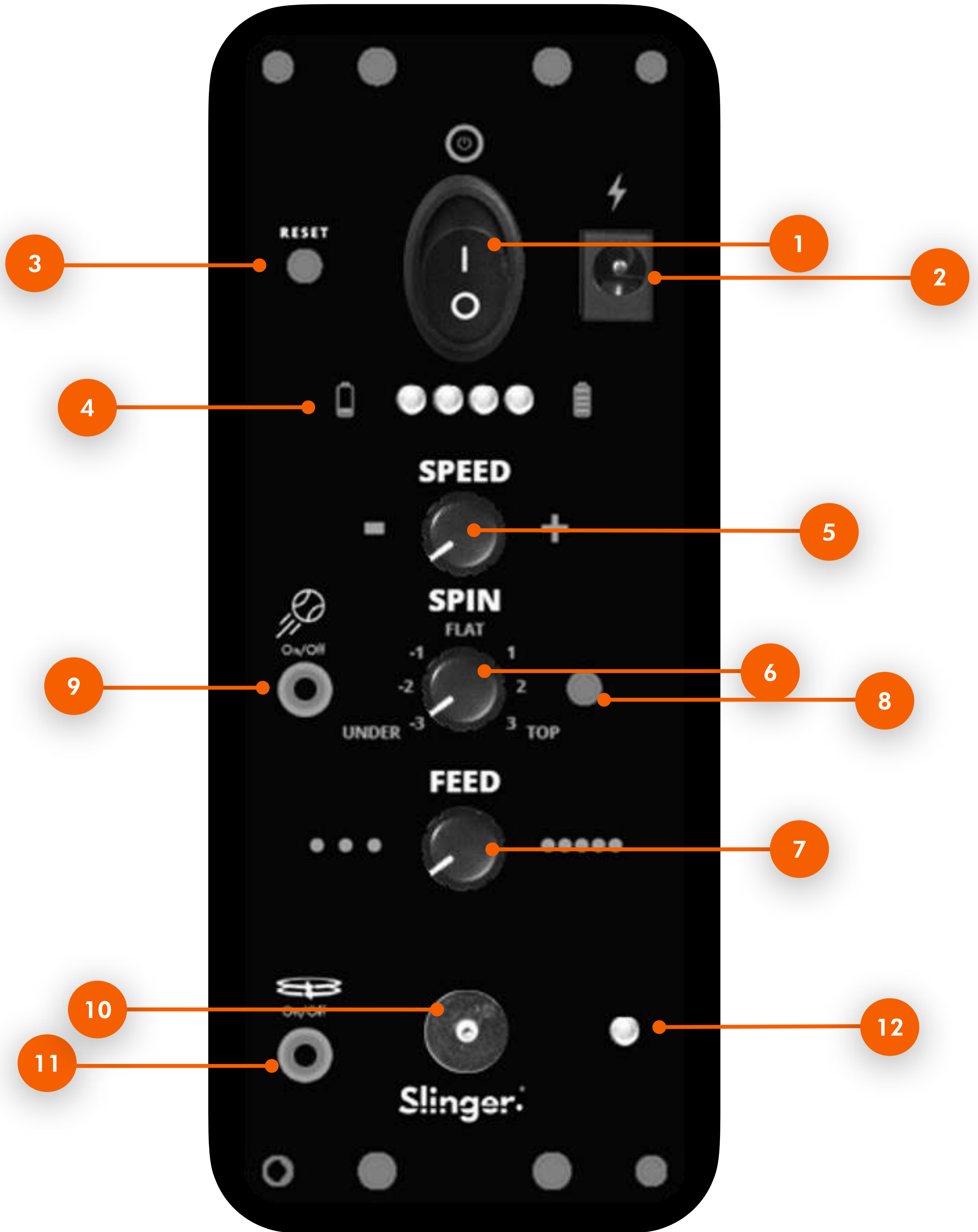
Slinger products are made from high grade recyclable materials. The battery should be removed from the launcher before it's disposed of and recycled in accordance with local ordinances or regulations. If your battery needs replacing please visit [www.slingerbag.com](https://www.slingerbag.com) to purchase a replacement.

11. **How long is my Slinger Battery life?**

Lithium-ion batteries are built to last, with energy and power packed into a small area. Over time, all batteries are subject to degradation. So if your run time has declined when the launcher is in regular use, it might be time to buy a new battery.



# CONTROLS



## SLINGER BAG LAUNCHER CONTROLS

1. POWER: The power switch turns the Launcher to "ON".



### USER NOTE

The Remote Control DOES NOT turn the Launcher power on or off. The Remote Control only operates AFTER the Power Switch on the control panel has been switched on.



### WARNING

Please note that if the ON / OFF switch is switched on then off in rapid succession there is a risk of causing damage to the electronic control panel.

2. CHARGER: Although the Slinger Bag control panel offers a charging point, Slinger Bag highly recommends that the battery is ALWAYS removed and charged OUTSIDE of the Slinger Bag. The recommended charging time for a fully drained battery is a maximum of 5 hours and the power should ALWAYS be disconnected when the battery is fully charged. The battery charger plugs into the charger socket on the front control panel.



### USER NOTE

The recommended charging time for a fully drained battery is a maximum of 5 hours.



### WARNING

Please ensure that the battery power is disconnected as soon as the battery lights indicate a full charge and never leave the battery connected to the power source for long periods to avoid the risk of overheating.

3. REMOTE CONTROL RESET: For resetting or replacing the remote control - see "remote control instructions" on page 24.
4. BATTERY INDICATOR LIGHTS: The battery is fully charged when all 4 LED lights are showing GREEN.



### USER NOTE

During use, the 4 LED green lights will decrease to 3 green lights, then 2, and finally to 1 green light, indicating a decreasing battery power level from full to medium to low. If only 1 yellow light is present, it indicates that the battery power is now low. Finally, if only 1 red light is illuminated, it signals that the battery is in a very low state and needs to be recharged as soon as possible.

## SLINGER BAG LAUNCHER CONTROLS (CONTINUED)

5. PICKLEBALL SPEED DIAL: Controls the speed of the pickleballs being fired. The launcher speed ranges from the lowest speed of 10mph/16kmph to an advanced player speed of 45mph / 73kmph.



### USER NOTE

The top speed can only be reached in FLAT mode (and not when spin knob is set to either TOP or UNDER spin).

6. SPIN RATE DIAL: Controls the spin of the pickleballs. Spin Rate range is -3 (maximum under spin) and 3 (maximum top spin). Point the dial to FLAT for flat balls.
7. FEED RATE DIAL: Controls the feed rate of the balls. Feed Rate range is between 2-7 seconds.
8. LAUNCHER BEEPS (SPEAKER): A series of "BEEP" sounds can be heard when operating the launcher as follows:
- Short Beep: When switching the Launcher to 'ON' on the control panel.
  - Short Beep: Whenever pressing the Remote Control "ON" or "OFF".
  - Long Beep: 5 to 10 seconds after pressing the Remote Control launcher button to 'ON', indicating that the feeder plate has started to rotate.
  - Short Beep: Whenever pressing the Remote Control Launcher button to "OFF".
9. LAUNCHER MANUAL ON/OFF SWITCH: Allows you to operate the launcher manually, in the event that you have lost or misplaced the remote. To turn ON the launcher, press and hold the button for 3 seconds. To turn it OFF, press the button once.



### IMPORTANT

It is highly recommended to always operate the Slinger Bag using the provided remote control for safety reasons. Please make sure not to misplace the remote. In exceptional circumstances, such as if the remote is lost, refer to the above instructions to operate the launcher without the remote control.

10. OSCILLATOR\* CONNECTOR: Magnetic Plug to connect to the Oscillator cable.
11. OSCILLATOR MANUAL ON/OFF SWITCH: Allows you to operate the oscillator manually, in the event that you have lost or misplaced the remote. Press the button once to turn oscillator ON and OFF.
12. OSCILLATOR\* LED: Indicates when the Oscillator is 'On' after pressing the Oscillator remote button or activating Oscillator manually.

## ELEVATION KNOB

The elevation knob gives the user an option to change the launching angle of the ball – the launching angle ranges between 10 and 40 degrees.

1. Open the side pocket
2. Rotate the knob counterclockwise to release it
3. Adjust the desired angle
4. Rotate the knob clockwise to lock it



### USER NOTE

Please ensure that you LOCK the elevation knob tightly in order to avoid vibration and noise.

**1**

Open side pocket

**2**

&amp;

**3**counterclockwise  
to release**4**

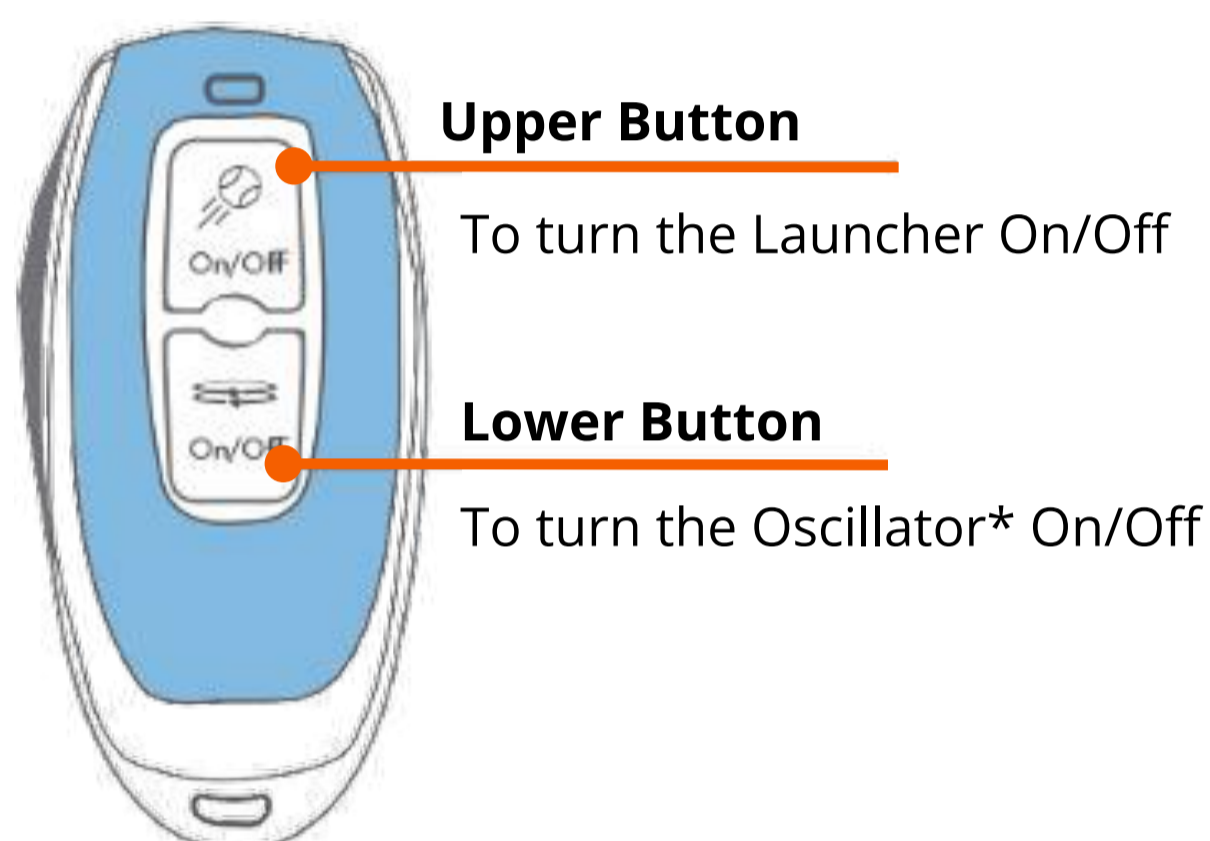
clockwise to lock

## REMOTE CONTROL INSTRUCTIONS



### USER SUGGESTION

When not in use attach the remote securely to one of the zipper pulls on the Slinger Bag. It is easy to remove for use and is easily replaced at the end of use.



## HOW TO CHANGE THE REMOTE

In the event the remote control needs to be replaced for any reason please follow these instructions to sync your new remote to your launcher.



### USER NOTE

Replacement remote control units can be purchased by visiting:  
[www.slingerbag.com/replacement-remote-control.html](http://www.slingerbag.com/replacement-remote-control.html)

1. Please ensure that NO BALLS are located inside the bag or the FEEDER PLATE.
2. Switch the launcher to "ON".
3. Using a small pin, push the reset button once (reset button #4 on the control panel).
4. Push reset button one more time to complete the syncing.
5. Press the top button on the remote to hear a BEEP which indicates a successful connection.

## COURT PLACEMENT

The Slinger Bag court placement depends mainly on the ball speed and the launching angle settings.

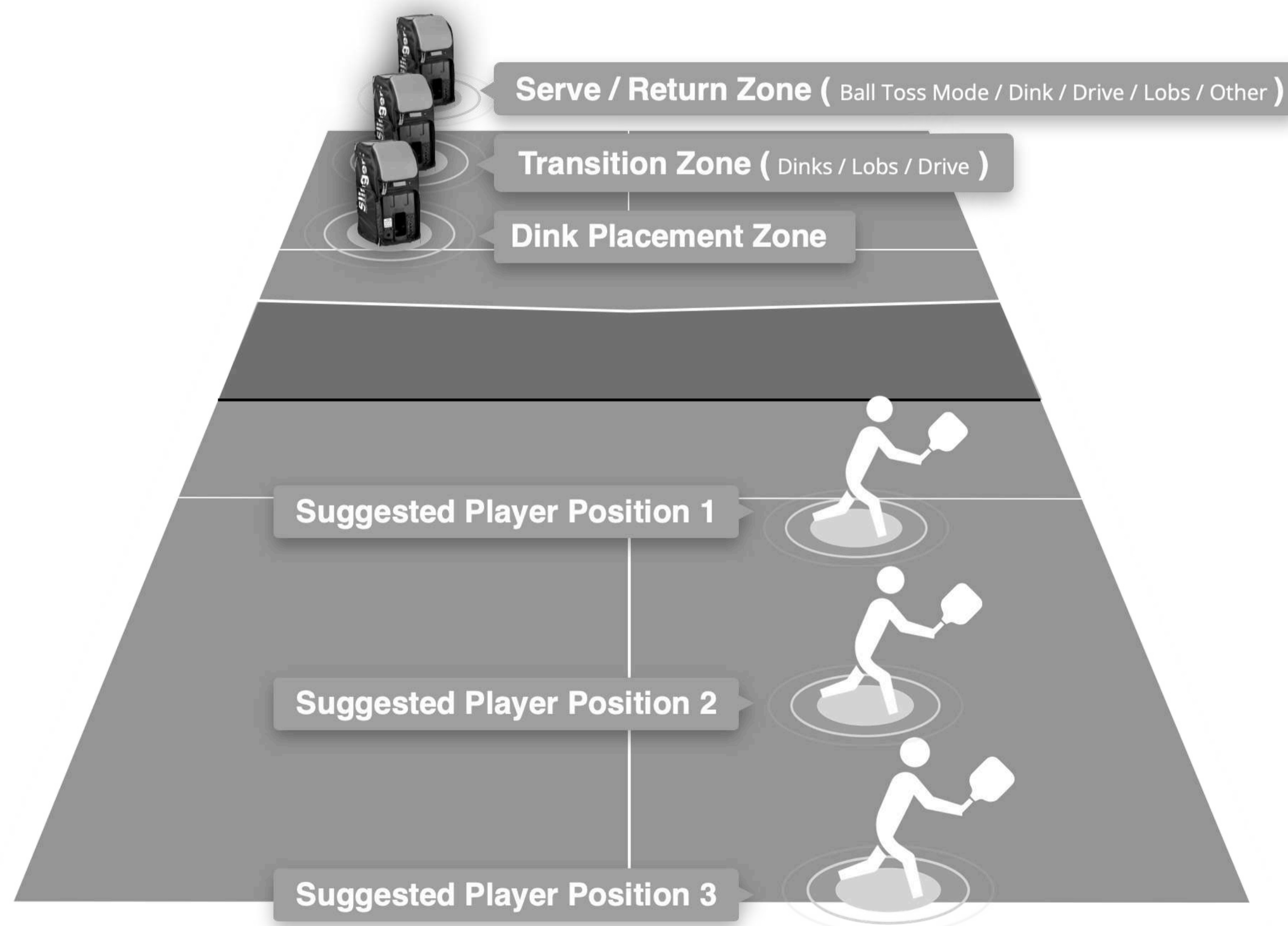


### USER NOTE

Poor quality or condition of the pickleballs used and /or the outdoor weather conditions will also affect the need to adjust the court placement.

The below suggested court placements are designed to help you get started according to your level of play. Along with the 3 suggested launcher and player court placements below, we actively encourage you to get creative with your Slinger Bag by adjusting the speed, spin, angle and feed according to your preferred level of difficulty.

You can also adjust direction of ball launch by using the Oscillator or by simply moving the axis of your Slinger Bag to the left or the right. This would then allow for more cross court or down the line feeding for specific tactical situations.



## TROUBLESHOOTING & MAINTENANCE

After use, court dust can typically build up on the fascia of the launcher. This is best removed using readily available pressurized air canisters, or by using a damp cloth.

- For General cleaning, when possible please use a pressurized air canister to clear.
- Use a damp cloth to wipe down the exterior surfaces of the machine.
- Never scrape at the surface of your Launcher with a sharp object, or use any harsh abrasives or solvents.
- Loose debris can be vacuumed out of the Launcher.
- Never use a water hose to attempt to remove debris out of the interior of the machine. Water pressure will damage the sensitive electrical components, as well as increase the risk of electric shock.

## STORAGE

The following actions will ensure optimum performance:

- When the Launcher is not in use, it should be stored in a dry and clean area.
- Excessive exposure to wind, rain, sunlight, etc. can often interfere with the operation of the sensitive electrical components and cause fading and/or other damage to Slinger Bag exterior.
- Do not store the battery for more than 30 days without recharging it to a minimum 30% level and remember to ALWAYS charge the battery outside of the Slinger Bag.
- We recommend that the Slinger is stored at temperatures between 64°F–82°F (18°C–28°C), away from direct sunlight.

## FACTORY TESTING

Before shipping, every Slinger Bag is fully QC tested at several points across the production assembly. As a result, there may be some residue either inside your Slinger Bag Launcher and/or possibly other marks left as a result of this QC testing. This is perfectly normal.

## TROUBLESHOOTING

**USER NOTE**

For more information visit: [www.slingerbag.com/support](http://www.slingerbag.com/support).

**WARNING**

Please make sure that the launcher power is in 'OFF' position before investigating any issues. For additional or specific help please email [support@slingerbag.com](mailto:support@slingerbag.com).

<b>PROBLEM</b>	<b>CAUSE</b>	<b>ACTION REQUIRED</b>
Ball is not launched	A ball is jammed in either the Feeder Plate or the Ball Chute.	<b>TURN OFF POWER, WAIT 1 MINUTE FOR THE FIRING WHEEL TO STOP ROTATING</b> and only then remove any jammed balls from either the feeder plate or from the Ball Launcher chute.
Ball is not launched	Pickleballs and/or pitching wheels are wet.	Wheels and/or balls require cleaning and drying. Remove any wet balls from hopper.
Feeding plate does not turn	A ball is jammed / too many balls in the hopper.	<b>TURN OFF POWER</b> and remove any jammed balls / from the hopper.
Feeding plate does not turn	Remote "On" not activated No battery power.	Standing to the front and side of the Launcher, press top button on remote once to start feeder plate rotation.



PROBLEM	CAUSE	ACTION REQUIRED
Feeding plate does not turn	If above fails to activate the feeder.	Contact support@slingerbag.com
Loud noise and / or vibration	Loose elevation bar knob.	Tighten the elevation knob.
Battery Not Charging and has no light when connected to a power outlet	Charger cable is not fully inserted in control panel.	Check all connections. Check power socket adapter is correctly selected and connected.
Oscillator not operating (both via remote or manually)	Magnetic Cable attachment needs cleaning.	Ensure that both ends of the magnetic connector are free from debris, dust etc.
Oscillator operating manually but not operating via remote control	Remote control button not activated.	With the Launcher "ON" press lower button on remote control to activate launcher. When Oscillator is connected there is a green LED illuminated above the magnetic connector socket.
Oscillator not operating at all ((both via remote or manually)	If the above have been checked and still no operation.	Contact support@slingerbag.com

## LIMITED WARRANTY

Please visit [slingerbag.com/warranty](https://slingerbag.com/warranty) and register your Slinger Bag and its unique serial number.

Your Slinger Bag comes with a standard Limited 1 year warranty (Limited 2 Year Warranty as standard in EU member markets) covering any manufacturing defects.

**Please visit [www.slingerbag.com/warranty](https://www.slingerbag.com/warranty) and register your Slinger Bag and its unique serial number. Registration will allow us to recognise the month and year of your launcher's manufacture and it will also automatically add you to our Pickleball mailing list.**

The serial number can be found here:



### **WHO IS COVERED?**

- The original owner of the Slinger Launcher, Oscillator, Collector Tube and Cell Phone Holder. The Slinger Launcher, Oscillator, Collector Tube and Cell Phone Holder must remain in the possession of the original purchaser for the warranty to remain valid. This Limited Warranty is not transferable.

### **WHAT IS COVERED?**

- If a defect arises in the Slinger Launcher, Oscillator, Collector Tube, Cell Phone Holder or any warranted component within the applicable Limited Warranty period, the purchaser's sole and exclusive remedy is for Slinger Bag to, at Slinger Bag's discretion to the extent permitted by law, either replace or repair the defective or malfunctioning Slinger Launcher, Oscillator, Collector Tube, Cell Phone Holder or component with the same or a comparable model.
- Any replacement or repaired component shall be warranted for the remainder of the original Limited Warranty period or 30 days, whichever is longer, or for any additional period that is required by applicable law.

## LIMITED WARRANTY

Please visit [slingerbag.com/warranty](https://slingerbag.com/warranty) and register your Slinger Bag and its unique serial number.

### WHAT IS NOT COVERED?

- Pickleballs of any kind.
- Lithium-Ion Battery charge capacity or battery life
- Normal wear and tear
- Cosmetic damage (i.e., minor scratches, surface deformations or discoloration) including natural fading of colors
- Damage caused by exposure to inclement weather
- Damage caused by rips, cuts and tears
- Products treated with steaming devices or other heat treatments
- Products with removed or defaced holograms or date codes
- Products purchased from unauthorized dealers (including, without limitation, products purchased through (i) auction sites such as E-Bay or Craigslist, (ii) unauthorized dealers selling via third party marketplaces such as Amazon marketplace, or (iii) dealers selling altered, doctored or counterfeit products)
- Counterfeit products
- Products purchased “used”, “as-is”, “without warranty”;
- Any other Slinger Bag products or services, non-Slinger Bag products, units that are, or that Slinger Bag reasonably believes to be, stolen, counterfeit, or purchased from an unauthorized distributor or reseller, units purchased outside of the user’s main market and units missing their serial number.
- Damage or equipment failure due to normal wear and tear, improper or negligent use, maintenance, or attempted repair (other than that caused by a Slinger Bag authorized service technician), use of the Slinger Launcher, Oscillator, Collector Tube or Cell Phone with parts or accessories from third parties, or with parts or accessories not originally intended for or compatible with the Slinger Launcher, Oscillator, Collector Tube or Cell Phone or any use contrary to the instructions in the Slinger Bag User Guide.
- Damage or equipment failure due to accident, abuse, improper or abnormal use, neglect, corrosion, discoloration of paint or plastic (or any other change in cosmetic appearance that does not affect performance), theft, vandalism, fire, flood, wind, lightning, freezing or other natural disasters or acts of God of any kind, electrical wiring, power reduction, power fluctuation or power failure from whatever cause, unusual atmospheric conditions, collision, the introduction of foreign objects, or modifications that are unauthorized or not recommended by Slinger Bag.

## LIMITED WARRANTY

Please visit [slingerbag.com/warranty](https://slingerbag.com/warranty) and register your Slinger Bag and its unique serial number.

### WHAT IS NOT COVERED? (CONTINUED)

- Incidental or consequential damages. Slinger Bag is not responsible or liable for indirect, special, incidental or consequential damages, economic loss, loss of property or profits, loss of enjoyment or use, or other consequential damages of any nature whatsoever in connection with the purchase, use, repair or maintenance of equipment or parts. Slinger Bag does not provide monetary or other compensation for any such repairs or replacement parts costs, including but not limited to club membership fees, work time lost, cost of substitute equipment, diagnostic visits, maintenance visits or transportation.
- Any attempt to repair Slinger Bag equipment creates a risk of injury and property damage. Slinger Bag is not responsible or liable for any damage or injury incurred during, or as a result of, any repair or attempted repair of equipment by anyone other than a Slinger Bag authorized service technician. All repairs attempted by you or your agents are undertaken AT YOUR OWN RISK and Slinger Bag will have no liability for any injury to persons or property arising from such attempted moves or repairs.
- Where permitted by law, replacement units, parts and electronic components reconditioned to as-new condition by Slinger Bag or its vendors may sometimes be supplied as warranty replacement and constitute fulfillment of warranty terms.

THIS LIMITED WARRANTY IS THE EXCLUSIVE WARRANTY GIVEN BY SLINGER BAG AND SUPERSEDES ANY PRIOR, CONTRARY OR ADDITIONAL REPRESENTATIONS. ALL OTHER WARRANTIES, EXPRESS OR IMPLIED, INCLUDING ANY STATUTORY WARRANTY OR CONDITION OF MERCHANTABILITY OR FITNESS FOR A PARTICULAR PURPOSE, ARE DISCLAIMED TO THE MAXIMUM EXTENT PERMITTED BY LAW. IN SUCH EVENT, SUCH WARRANTY IS LIMITED TO THE DURATION OF THE WARRANTY PERIODS SET FORTH ABOVE. THIS EXCLUSION APPLIES EVEN IF THIS WARRANTY FAILS OF ITS ESSENTIAL PURPOSES AND REGARDLESS OF WHETHER DAMAGES ARE SOUGHT FOR BREACH OF WARRANTY, BREACH OF CONTRACT, NEGLIGENCE, OR STRICT LIABILITY IN TORT OR UNDER ANY OTHER LEGAL THEORY. SOME JURISDICTIONS DO NOT ALLOW THE EXCLUSION OR LIMITATION OF INCIDENTAL OR CONSEQUENTIAL DAMAGES, SO THE ABOVE LIMITATION MAY NOT APPLY TO YOU. THIS LIMITED WARRANTY GIVES YOU SPECIFIC LEGAL RIGHTS, AND YOU MAY ALSO HAVE OTHER LEGAL RIGHTS, WHICH VARY FROM STATE TO STATE.

**Please ensure that the power is switched to “OFF” and unplugged from any electrical connection before attempting any activity which involves reaching into the launcher mechanism for any reason including for maintenance or cleaning.**



### IMPORTANT

It is highly recommended to always operate the Slinger Bag using the provided remote control for safety reasons. In exceptional circumstances, such as if the remote is lost, refer to page 19 for instructions on operating the launcher without

## GLOBAL COMPLIANCE & CERTIFICATION

Battery type	Certificate item	Applicable area	Testing standard	Issue Unit	Period of validity	Mandatory	Certified
14.4v 6.6ah	CB	EU/International	IEC62133-2: 2017	UL	long-term effective unless the standard is change	Yes	Yes
	CE-EMC	EU	EN55032/EN55024 or EN61000-6-1/3	UTL	long-term effective unless the standard is change	Yes	Yes
	UN38.3	International transport	UN(T1-T8)Revised Edition 6	UTL+Air report (DGM)	long-term effective unless the standard is change	No	Yes
	MSDS		New edition OSHA	UTL	validity for one year	No	
	BIS	India	IS16046	BIS	It is valid for two years and can be renewed before the certificate expires.	Yes	Yes
	BSMI	Tiawan	CNS15364	BSMI	It is valid for three years and can be renewed before the certificate expires.	Yes	Yes
	RCM	Australia & New Zealand	AS/NZS CISPR 22	UTL	long-term effective unless the standard is change	Yes	Yes
	PSE	Japan	Appendix 9	UTL	long-term effective unless the standard is change	Yes	Yes
	KC	Korea	KC62133	KTC	long-term effective unless the standard is change	Yes	Yes
	UL	USA	UL2054	UL	need audite factory four times a year, long-term effective unless the standard is change	No	No
	UL	Canada	UL2054+UL62368	UL	need audite factory four times a year, long-term effective unless the standard is change	No	No



Europe

CB

CE



Category	Product	Certification	Certification Standards
Launcher	6.6Ah Battery	<b>CB</b>	<ul style="list-style-type: none"> <li>IEC 62133-2:2017</li> <li>EN 62133-2:2017</li> </ul>
		<b>CE EMC</b>	<ul style="list-style-type: none"> <li>EN 61000-6-3:2007+A1:2011+AC:2012</li> <li>EN IEC 61000-6-1:2019</li> <li>EN IEC 61000-3-2:2019</li> <li>EN61000-3-3:2013+A1:2019</li> </ul>
	2A Power Charger	<b>CB</b>	<ul style="list-style-type: none"> <li>IEC 61558-1:2005+A1</li> <li>IEC 61558-216:2009+A1</li> </ul>
		<b>CE-EMC &amp; CE-LVD</b>	<ul style="list-style-type: none"> <li>EN 55014-1:2007</li> <li>EN 55014-2:2015</li> <li>EN IEC 61000-3-2:2019</li> <li>EN 61000-3-3:2013</li> <li>EN 61558-1:2005+A1</li> <li>EN 61558-2-16:2009+A1</li> </ul>
		<b>RoHS</b>	European Council Directive 2011/65/EU on the Restriction of the Use of Certain Hazardous Substances in Electrical and Electronic Equipment
		<b>GS</b>	<ul style="list-style-type: none"> <li>EN 61558-1:2005+A1</li> <li>EN 61558-2-16:2009+A1</li> </ul>
	6300RPM Big Motor	<b>CE</b>	<ul style="list-style-type: none"> <li>EN 55014-1:2006/A2:2011</li> <li>EN 55014-2:1997/A2:2008</li> </ul>
		<b>RoHS</b>	2011/65/EU Restriction of Hazardous Substances
	Launcher Gear Motor	<b>CE-EMC</b>	<ul style="list-style-type: none"> <li>EN 61000-6-3:2007+A1:2011</li> <li>EN ICE 61000-6-1:2019</li> </ul>
		<b>RoHS</b>	<ul style="list-style-type: none"> <li>IEC 62321-3-1:2013</li> <li>IEC 62351-5:2013</li> <li>IEC 62321-4:2013+AMD1:2017</li> <li>IEC 62321-7-1:2015</li> <li>IEC 62321-7-2:2017</li> <li>IEC 62321-6:2015</li> <li>IEC 62321-8:2017</li> </ul>



REACH



Category	Product	Certification	Certification Standards
Launcher	PCB	<b>RoHS</b> (for LF HASL)	<ul style="list-style-type: none"> <li>RoHS Directive (EU) 2015/863 amending Annex II to Directive 2011/65/EU</li> <li>IEC 62321-4:2013+A1:2017</li> <li>IEC 62321-5:2013</li> <li>IEC62321-72:2017</li> <li>IEC62321-6:2015</li> <li>IEC62321-8:2017</li> <li>Analyzed ICP-OES, UV-Vis, and GC-MS</li> </ul>
		<b>REACH</b> (for SVHC)	
	433MHz Remote Control	<b>CE Red</b>	<ul style="list-style-type: none"> <li>Radio Equipment Directive (RED) 2014/53/EU</li> <li>EN 62479:2010</li> <li>EN 50663:2017</li> <li>Final draft EN 301 489-1 V2.2(2019-09)</li> <li>En 301 489-3 V2.1.1(2019-03)</li> <li>EN 300 220-1 V3.1.1(2017-02)</li> <li>EN 300 220-2 V3.1.1(2017-02)</li> </ul>
Oscillator	Oscillator Gear Motor	<b>CE-EMC</b>	<ul style="list-style-type: none"> <li>EN 61000-6-3:2017+A1:2011</li> <li>EN 61000-6-1:2019</li> </ul>
		<b>RoHS</b>	<ul style="list-style-type: none"> <li>IEC 62321-3-1:2013</li> <li>IEC 62351-5:2013</li> <li>IEC 62321-4:2013+AMD1:2017</li> <li>IEC 6232-7-1:2015</li> <li>IEC 62321-7-2:2017</li> <li>IEC 62321-6:2015</li> <li>IEC 62321-8:2017</li> </ul>
Ball Tube		<b>CE</b>	<ul style="list-style-type: none"> <li>EN 71-1:2014+A1:2018</li> <li>EN 71-2:2011+A1:2014</li> <li>EN 71-3:2013+A3:2018</li> </ul>

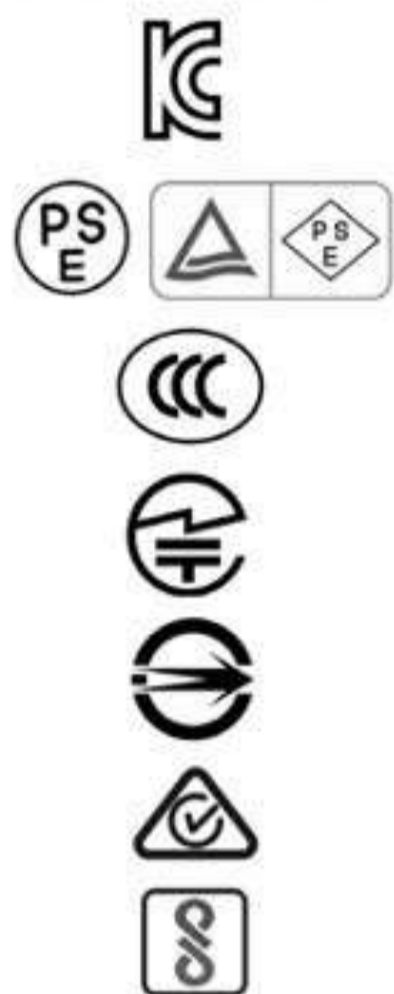


IC

California 65

ASTM

Category	Product	Certification	Certification Standards
Launcher	2A Charger	<b>FCC</b>	<ul style="list-style-type: none"> <li>FCC Part 15 Subpart B, 10-1-2014 Edition</li> </ul>
		<b>UL/CUL</b>	<ul style="list-style-type: none"> <li>UL 60950-1, 2nd Edition, 2014-10-14 (Information Technology Equipment - Safety- Part 1: General Requirements)</li> <li>CAN/ CSA C22.2 No. 60950-1-07, 2nd Edition, 2014-10 (Information Technology Equipment - Safety- Part 1: General Requirements)</li> </ul>
		<b>Argentina Safety-Mark License</b>	<ul style="list-style-type: none"> <li>IEC 61558-1:2005+A1</li> <li>IEC 61558-2-16:2009+A1</li> <li>IRAM 2063:2009</li> </ul>
	433 MHz Remote Control	<b>UL</b> (for Wiring, Printed-Component)	
		<b>FCC</b>	<ul style="list-style-type: none"> <li>FCC Part 15, Subart C, Section 15.231</li> <li>ASNI C63.10-2013</li> </ul>
Trolley Bag	<b>IC</b>	<ul style="list-style-type: none"> <li>RSS-210 Issue 9 Aug, 2016</li> </ul>	
Ball Tube	Launcher Gear Motor	<b>California 65</b> (for Fabric & Printing)	<ul style="list-style-type: none"> <li>ASTM F963-17</li> </ul>



Category	Product	Certification	Certification Standards
Launcher	6.6Ah Battery	<b>KC</b>	• KC62133-2 (2020-07)
		<b>PSE</b>	• Interpretation for METI Ordinance of Technical Requirements (H25.07.01) Appendix 9: Lithium ion secondary batteries
		<b>BSMI</b>	• CNS15364
		<b>BIS</b>	• IS 16046 (Part 2):2018/ IEC 62133-2:2017
		<b>RCM</b>	• EN 61000-6-3:2007+A1:2011+AC:2012; EN IEC 61000-6-1:2019 ; EN IEC 61000-3-2:2019 EN 61000-3-3:2013+A1:2019; IEC 62133-2:2017
	2A Charger	<b>SAA</b>	• AS/ NZS 61558.1:2008+A1+A2+A3 • AS/ NZS 61558.2:16:2010+A1+A2+A3
		<b>CCC</b>	• CNCA-C09-01:2014 • GB4943.1-2011 • GB/T9254-2008 • GB17625.1-2012
		<b>PSE</b>	• Interpretation on Ministerial Ordinance establishing Technical Requirements Appendix 12: j61558-1(H26), j61558-2-16(h26), j55014-1(h20) • Appendix 4 of the Enforcement Regulations (AC Electrical Appliances)
		<b>KC &amp; KCC</b>	• K 60950-1(2011-12) • Clause 3, Article 58-2 of Radio Waves Act.
	433 MHz Remote Control	<b>KC RF</b>	• K 60950-1(2011-12) • Clause 3, Article 58-2 of Radio Waves Act.
315 MHz Remote Control	<b>MIC</b>	• Technical Regulations Conformity Certification of Special Radio equipment (ordinance of MPT N° 37, 1981) • ARIB STD-T93 V1.1 (2007-09)	

Category	Product	Certification	Certification Standards
Launcher	6.6Ah Battery	<b>UN38.3</b>	• ST/SG/AC.10/Rev.6/Amend.1/Section 38.3
		<b>Material Safety Data Sheet (MSDS)</b>	• EEC Directive 93/112/EC • UN Recommendation on the Transport of Dangerous Goods
		<b>Identification and Classification Report for Air Transport of Goods</b>	• IATA Dangerous Goods Regulations • IATA DGR 61st, 2020 • IATA DGR 62nd, 2021
		<b>Identification and Classification Report for Transport of Goods (By Sea)</b>	• IMDG CODE (Amdt 39-18)
		<b>Lithium Cells for Battery Test Summary</b>	• UN Manual of Tests and Criteria Part III Subsection 38.3, Rev.6/Amend.1

## EUROPEAN COMPLIANCE



As indicated by this symbol, disposal of this product is governed by Directive 2012/19/EU of the European Parliament and of the Council on waste electrical and electronic equipment (WEEE). WEEE could potentially prove harmful to the environment and as such the Directive requires that the battery in this product must not be disposed of as unsorted municipal waste, but rather collected separately and disposed of in accordance with local WEEE ordinances and guidelines.

## ENERGY CONSUMPTION

In accordance with Directive 2009/125/EC this device is equipped with a power switch.

The following energy consumption figures apply (measured with a watt meter at the outlet):

Switch in OFF position = 0.0 watts

Switch in ON position = 120 watts